



THE AWARDS | **SHORTLISTED**
2016 | UNIVERSITY OF THE YEAR



WORCESTER

INTERNATIONAL STUDENT GUIDE (UNDERGRADUATE)

WELCOME TO WORCESTER

HERE AT THE UNIVERSITY OF WORCESTER, WE OFFER AN OUTSTANDING UNIVERSITY EDUCATION AND A LIFE-CHANGING OPPORTUNITY TO STUDY ABROAD. DR HEATHER FORLAND, PRO VICE CHANCELLOR INTERNATIONAL, EXPLAINS WHAT WORCESTER HAS TO OFFER.



I am delighted that you are thinking of coming to study at the University of Worcester.

At Worcester we offer high-quality teaching and courses that are aimed at enhancing your career as well as valuable support for all our students from academic and professional staff. Many of our courses are accredited by the professions and offer work placements and industry connections. Your studies at the University of Worcester will prepare you well to succeed in the fast-changing international economy and to be an effective global citizen.

The University of Worcester is located in a friendly and traditional English city in the heart of the country and welcomes students from all over

the world and from many different cultures and backgrounds. We are sure that you will find studying and living here to be stimulating and rewarding; in fact, we think that it will be a life-changing experience.

I hope that you find this guide useful and that it answers your questions about studying in the UK at the University of Worcester. I look forward to welcoming you if you come to Worcester to embark on the journey of a lifetime.

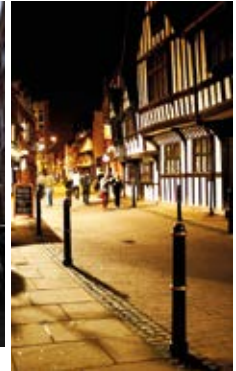
A handwritten signature in black ink, appearing to read 'Heather Forland'.

Dr Heather Forland
Pro Vice Chancellor International
University of Worcester



The City Campus

A FIRST-RATE UNIVERSITY AND CATHEDRAL CITY



A GREAT STUDENT CITY

A beautiful, heritage-rich cathedral city in the English countryside, Worcester offers a unique combination of small-town charm and big-city sophistication. The cosmopolitan city provides a vibrant student experience and is a great place to live.

Renowned for its captivating history and colourful culture, the compact city centre is brimming with riverside cafés and bars, stylish shops, museums, theatres, and plenty of live cultural events.

A CITY OF CULTURE AND HISTORY

With its rich history, fascinating sites and a busy events calendar, you'll never be stuck for things to do in Worcester. City highlights include the Tudor architecture of Friar Street, Worcester City Art Gallery and Museum, outdoor Shakespeare productions from the Swan Theatre, the Victorian 30-acre Spetchley Gardens, and the University's very own vibrant live arts and children's literature festival.

GETTING AROUND

Travelling around the city is easy, whether you're exploring on foot, by bicycle or by bus. With University campuses and facilities within a 20 minute walk of each other and the city centre nearby, you can head out on foot or borrow a bicycle through the University's Cycle Loan Scheme. Alternatively, you can hop on a bus right from St John's campus with discounted student semester bus tickets available.

WORCESTER WAS RECENTLY NAMED IN THE TOP TEN HAPPIEST PLACES IN THE UK AND THE SUNDAY TIMES INCLUDED WORCESTER IN THEIR TOP 50 BEST PLACES TO LIVE IN BRITAIN.

CLOSER THAN YOU THINK

Centrally located and with excellent rail and road links, Worcester is easily reached from the rest of the UK, making it quick to get to us from many UK airports.

Nearby cities and towns include:

BIRMINGHAM

Less than an hour away, the UK's second largest city has much to offer including a new shopping complex, theatres, museums and national sea life centre.

STRATFORD-UPON-AVON

Home of William Shakespeare, this Cotswold town has many shops and restaurants to discover and is only 45 minutes away.

CHELTENHAM

This regency town hosts an international literature and science festival and a world-famous horse race. Just down the motorway, it's an easy 30 minute drive.

CARDIFF

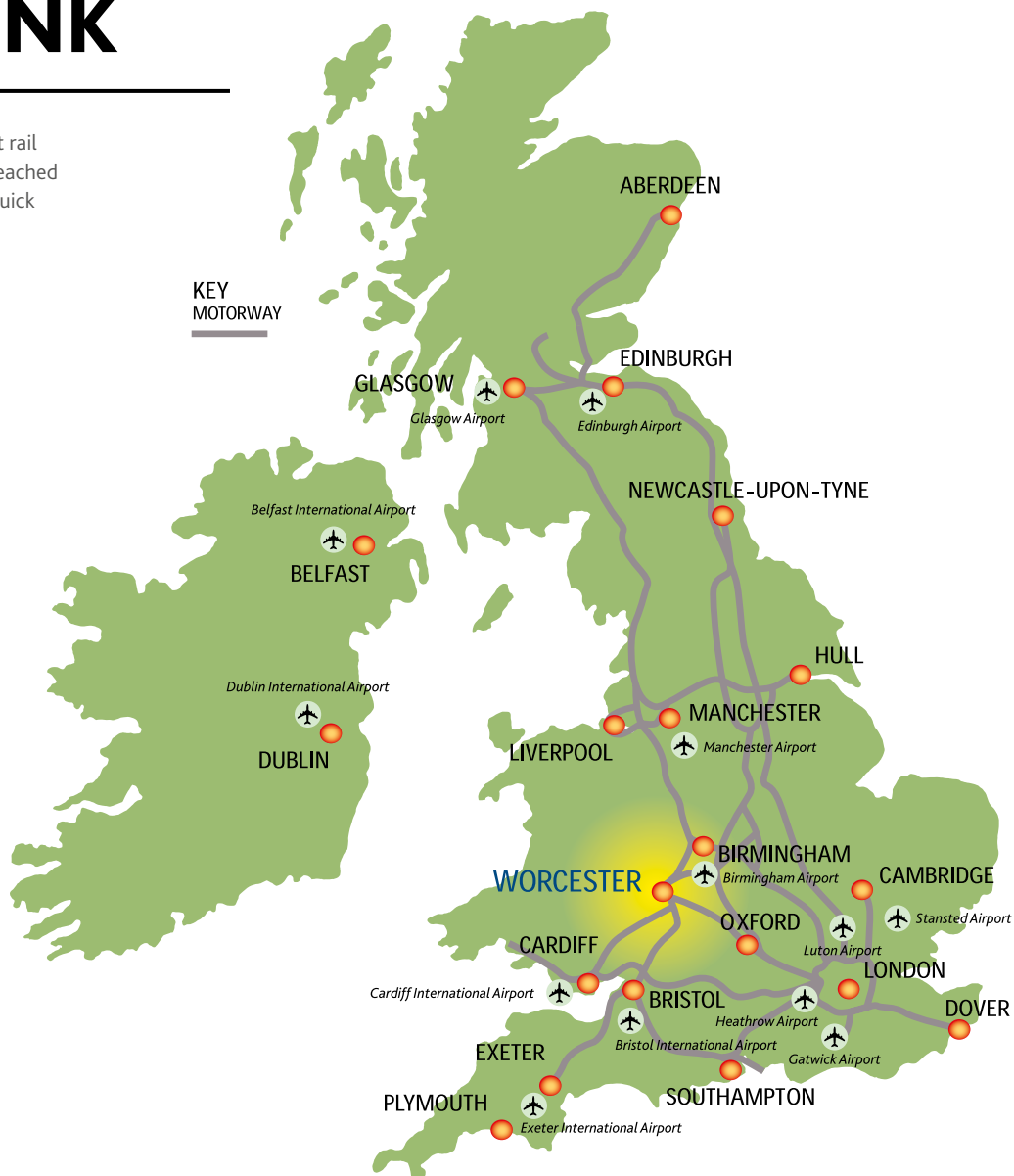
In just 90 minutes, you can get to the capital of Wales, which boasts top-class sporting fixtures and a bustling shopping scene.

LONDON

You can visit the capital of England, with its never-ending list of attractions and world-famous landmarks, in just over two hours from Worcester.

OXFORD

Direct trains to Oxford make day trips relaxed and hassle-free.



THE UNIVERSITY OF WORCESTER – INSPIRED FOR LIFE

THE UNIVERSITY OF WORCESTER IS A COMMUNITY WHERE STUDENTS LOVE TO LIVE AND LEARN. COMMITTED TO HIGH STANDARDS OF ACADEMIC ACHIEVEMENT, WE BELIEVE IN THE POWER OF EDUCATION TO INSPIRE, MOTIVATE AND EMPOWER. WE ARE PROUD OF THE CONTRIBUTION OUR STUDENTS MAKE TO SOCIETY – BOTH AT WORCESTER AND BEYOND – AND WE ARE DEDICATED TO INVESTING IN THEIR FUTURE.

INVESTING IN INSPIRATION

With over £150 million invested in the University over the last few years, Worcester is home to a whole host of exceptional facilities. From cutting edge clinical suites and inspiring art studios to science laboratories, our students are able to learn in a modern, stimulating environment. The award-winning Hive library is Britain's first joint university and public library, and the University of Worcester Arena, catering for disability by design, is home to both the Men's and Women's Great Britain Wheelchair Basketball teams.

TEACHING REAL WORLD SKILLS

We believe in preparing our students for the world outside Worcester. Our teaching methods focus on experiential learning, putting research in practice and allowing students to apply what they learn. Many of our academic staff are practitioners themselves, bringing practical experience and real world knowledge to pass on to their students. And with over 95% of students employed or in further education just 6 months after graduation, the results speak for themselves.

SUPPORTING OUR STUDENTS

We give our students the support they need to fulfil their potential. Pastoral care is embedded in our culture and includes academic tutors who guide students through their studies, an extensive earn as you learn scheme and a dedicated point of advice and support for students in 'firstpoint', situated within easy reach on campus. All international and EU students are invited to attend an International Induction ahead of the University Welcome Week. This is your opportunity to adjust to the climate and culture and to sort out practicalities such as opening bank accounts, registering with the police, if required, and meeting other international students.

MAKING A DIFFERENCE

Education has the power to change lives. Our wide range of flexible and innovative courses provides a lot of opportunities to our students from all over the world to learn specific and transferable knowledge and to equip them with skills that they can later use in life to make changes around them.



**FRIENDLY,
COMMUNITY
FEELING**
WITH LOTS
OF STUDENT
SUPPORT

ALL FACILITIES
ARE WITHIN
EASY WALKING
DISTANCE FROM
EACH OTHER
AND FROM THE
CITY CENTRE

THE HIVE LIBRARY
HAS WON
NOMINATIONS
FOR
50
AWARDS

**RATED
IN THE
TOP 10**
IN THE UK FOR
SPORTS BY
WHICH? GUIDE

200
COURSES
ACROSS A
WIDE RANGE
OF SUBJECTS

OVER
95%
OF GRADUATES
EMPLOYED
OR IN FURTHER
STUDY SIX MONTHS
AFTER GRADUATION

**ONE
OF THE
GREENEST**
UNIVERSITIES IN
THE COUNTRY

£150
MILLION
INVESTED IN
OUR CAMPUS
IN RECENT YEARS



STUNNING
ON-CAMPUS
ACCOMMODATION
**WITH
EN SUITE
OPTIONS**

ACCOMMODATION
IS GUARANTEED
FOR FIRST YEAR
STUDENTS WHO
CONFIRM THEIR
OFFER BY AUGUST

ACCOMMODATION

YOU CAN CHOOSE FROM SEVERAL TYPES OF HIGH-QUALITY ACCOMMODATION,
MUCH OF IT RECENTLY BUILT OR RENOVATED, INCLUDING BESPOKE
ACCOMMODATION AVAILABLE FOR DISABLED STUDENTS

ALL HALLS OF RESIDENCE BENEFIT FROM:

FREE

WIRED AND WIRELESS
INTERNET ACCESS

NO EXTRA CHARGES

FOR GAS, ELECTRICITY
OR WATER

24-HOUR SECURITY

AND WELFARE
SUPPORT

24-HOUR EMERGENCY

MAINTENANCE

FREE

CONTENTS IN ROOM
INSURANCE

FACILITIES FOR
RECYCLING

CLEANING OF
COMMUNAL AREAS

FREE GYM MEMBERSHIP

Living in Halls is a great way to experience university life. We have over 1,000 rooms available, gathered together in lively student communities right in the heart of our campuses. All rooms are single occupancy, fully furnished and – in newer halls – there are en suite rooms, secure video entry and flat screen TVs too. We've also got bespoke accommodation available for disabled students. Whatever your needs and budget, you are sure to find somewhere you'll feel right at home.

WHAT ARE THE OPTIONS?

Choose from several types of high quality accommodation, much of it recently built or renovated.

We have halls of residence at both our St John's and City campuses, as well as University-managed halls of residence in the heart of the city centre and near to St John's. The contract length for postgraduate students is 52 weeks.

Our accommodation team can also help you find off-campus accommodation through a network of landlords accredited by the University of Worcester.

HOW MUCH?

Your rent will depend on the type of hall that you choose. Our rents for 2017/18 range from £94 per week for rooms with a shared kitchen and bathroom to £153 per week for en suite extra accommodation. You can find all of the latest prices, which are subject to change, on our website at worchester.ac.uk/accommodationfees

HOW TO APPLY

You'll need to complete your application online and we'll send full details and payment instructions once you've accepted the University of Worcester as your first choice.

Accommodation is allocated on a first-come, first-served basis, so it's important to apply as soon as possible.

YOUR PLACE GUARANTEED

If you confirm an offer from us and apply for accommodation by August, **you are guaranteed a place in our University-managed accommodation.**

TAKE A LOOK AROUND

You can take a look on our website for photo galleries and videos at worchester.ac.uk/accommodation

GETTING YOUR NEW HOME

For more on your accommodation options and how to apply visit worchester.ac.uk/accommodation

Or get in touch with us
accommodation@worc.ac.uk
+44 (0)1905 855300

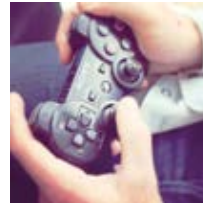


If you're an undergraduate international student and you accept an offer from us and apply for accommodation by August, you are guaranteed a place in our University-managed accommodation.



VIRTUAL ACCOMMODATION TOUR

You can view our Halls online through our photos and videos at: worchester.ac.uk/accommodation





1. TRADITIONAL:

ST JOHN'S CAMPUS, EVESHAM & PERSHORE HALLS

Three-storey Evesham and Pershore Halls have 54 single study bedrooms and six rooms with a shared study area. All rooms have a washbasin. Groups of 8-10 students share a kitchen, two bathrooms and toilet facilities.



2. STANDARD:

ST JOHN'S CAMPUS, AVON & LEDBURY HALLS

Avon and Ledbury have 34 flats over three floors, each with four or six study bedrooms. Each flat has a shared kitchen and lounge area. There's a bathroom, shower room with toilet and another separate toilet in each flat.



3. STANDARD PLUS:

ST JOHN'S CAMPUS

Each of the St John's Standard Plus Halls has four or six flats over two or three floors, with six study bedrooms. There are two toilet/shower rooms per flat and each bedroom has a washbasin.



4. EN SUITE:

ST JOHN'S CAMPUS

Our two St John's en suite Halls have six flats over three floors, each made up of six or seven study bedrooms. Each room has an en suite bathroom with washbasin, shower and toilet. Four rooms are adapted for wheelchair use.



5. EN SUITE EXTRA:

CITY CENTRE HALLS OR ST JOHN'S HALLS

Setting a high standard in student living, these Halls (brand new in 2009) include 182 en suite rooms at St John's and 177 en suite rooms at our City Campus. All have large, shared kitchen and dining areas, while the study bedrooms are light, airy, spacious and fully furnished in a contemporary style. You'll find flat screen TVs in the communal areas and a secure video-entry system.



6. EN SUITE:

CITY CENTRE, SANSOME HALL, OLD POST OFFICE

These properties are less than a 10-minute walk to the City Campus. They are leased by the University. Sansome Hall includes washing machines and dryers in all the flats. All rooms in these properties still benefit from free insurance, gym membership, University in-house 24-hour security and emergency maintenance response (non-urgent maintenance will be completed by a third party).



Halls of Residence on St John's Campus

OTHER ACCOMMODATION OPTIONS

UNIVERSITY-MANAGED ACCOMMODATION

Our Accommodation Team can also help you find off-campus accommodation through a network of landlords accredited by the University of Worcester.

There's a wide range of private accommodation just a short walk from the main campus. We work closely with landlords and the City Council to make sure all housing is accredited and of a good standard, and the University will liaise with the landlords so you don't have to. Internet and all the bills, such as gas, electric and water bills are included in the rent prices. You will be with other first-year students. Let periods will be for 42 weeks.

PRIVATE HOUSING

Our Accommodation Team can give you advice on areas like tenancy agreements, questions to ask your landlord and fire safety precautions. All accredited properties can be found at www.worcesterstudentpad.co.uk but you'll need a password. Call the Accommodation Team on **+44 (0)1905 855300** or email accommodation@worc.ac.uk to receive your password.

LIVING WITH A FAMILY

If you're looking for accommodation with more of a family feel, we have a small number of Worcester families who let rooms. Contact us for more details.

“LIVING ON CAMPUS, IN SUCH A SAFE, FRIENDLY AND SUPPORTIVE ENVIRONMENT, REALLY HELPED ME TO LEARN HOW TO LIVE ON MY OWN, STEP BY STEP. IT WAS A NICE TRANSITION FROM GETTING HELP FROM MY PARENTS FOR MANY THINGS TO SORTING OUT EVERYTHING BY MYSELF.”

Dina, Bulgarian student

NEXT STEPS:

APPLYING FOR OUR ACCOMMODATION

You will be able to apply for accommodation at the University of Worcester once you have firmly accepted an offer of a place with us. Accommodation is allocated on a first-come, first-served basis so it is important that you apply as soon as possible (normally from December onwards for the next academic year).

Once you have accepted Worcester as your firm choice, you'll be sent a student ID number and a secure link to complete your application form and select your accommodation preferences.

FRIENDLY SUPPORT

Our Accommodation Team are here to give you advice, help you apply and support you throughout your time at University, making sure you are happy and settled in your new home.

If you have any questions, please call **+44 (0)1905 855300** or email accommodation@worc.ac.uk

SPEAK TO THE ACCOMMODATION TEAM AND OUR STUDENTS

Many of our students will have gone through similar experiences and had the same questions as you. Visit our Student Life Blog at worcesterstudentlife.com and select the 'Accommodation' category to pick up hints and tips and read about life in Halls.

HOW TO APPLY

Full-time degrees (BSc, BA, HND and Foundation degrees)

If you are applying for a full-time undergraduate course, EU/Non-EU students are strongly advised to apply online through the Universities & Colleges Admissions Service (UCAS) at www.ucas.com You can get in touch with us at international@worc.ac.uk before you apply for advice. Information on specific qualifications is available on our website.

What do you need to include in your application?

We will assess your application based on the following information, which you should include in your application form:

- Academic transcripts
- Copies of degree/diploma certificates if applicable
- Academic reference letter
- An English language test score if applicable
- Your personal statement

It is important that you send evidence of qualifications to us – either paper copies by mail or scanned and emailed – as soon as possible. The International Team and Admissions Office will process your application and, if the application is complete, will respond with a decision as soon as we can.

Making you an offer

All applications to the University of Worcester are carefully considered by an admissions tutor (an academic member of staff from the relevant course area), whose job is to view applications. They will make one of the following offers or responses to you through via the online application system:

- An Unconditional offer (if you have already achieved the entry requirements)
- A Conditional offer (where you need to achieve specified entry requirements before you are accepted)

- Refer you to another, more suitable course where applicable
- Regretfully reject your application (this does not prevent you from applying again in a subsequent year)

For full details about the different stages of the application process, please refer to our website at worchester.ac.uk/international

Good luck with your preparation and we hope that you will become part of our international community. For any questions, please contact international@worc.ac.uk

ENTRY TO THE UK: VISAS

Many of our international students need a Tier 4 visa to study in the UK. Applying for a student visa isn't as complicated as you might think. The information below will help you understand the key facts about student visas and how to make an application.

Speak to our advisors

We understand the need for support through the visa application process, so we have an International Student Advisor on hand to deal with any of your questions or concerns. Contact us by email at internationalexperience@worc.ac.uk We can also arrange a Skype appointment.

Our advisors can offer support to all applicants. However, we particularly recommend you contact us if you have been asked to attend a second visa interview, have had a previous visa refusal or if you are not being supported by a professional advisor (such as an agent, current institution or regional office).

Passport

We advise our students to apply for a passport as soon as possible if you do not have one.

Request a CAS (Confirmation of Acceptance of Studies)

A CAS will be issued by the University once you have met all the conditions stated

in your offer, and you have provided the required evidence to the University.

Once you have your CAS

You will be sent a draft CAS for review. You are expected to check this carefully and notify the Admissions Office if anything is incorrect. Once you have confirmed the draft's accuracy, you will be sent the final version.

Prepare for a visa application

Check that you have all original copies of documents listed on your Confirmation of Acceptance of Studies and translations if required. Make sure that documents showing proof of finances meet the UK Visas and Immigration (UKVI) requirements and that the money has been held for long enough.

If your proof of finances are not in pounds sterling then check the exchange rate at your local bank or online.

Important dates to check the exchange rate are: opening balance, closing balance and the day you are going to submit your visa application. You need to make sure that you have enough funds in your bank on all of the above dates.

Apply for a visa

Register for a visa account at: www.visa4uk.fco.gov.uk

Complete the Tier 4 (general) application form, pay the health surcharge (if applicable) and visa fees and book an appointment online.

Attend an appointment

Visit a Visa Application Centre in person to submit an application and all documents and passport photographs. You will need to give your biometric information and attend an interview at this time.

Receive your visa/passport

Applicants can choose to collect their passports in person or via courier.

LANGUAGE REQUIREMENTS & SUPPORT

We accept IELTS, Pearson and many Cambridge certificates as a proof of English language fluency on our degree courses, as well as many other English language qualifications.

If you are currently applying for a pre-degree course (for example pre-sessional or International foundation) and need a Tier 4 visa to study at the University of Worcester, you must have a Secure English Language Test at an approved test centre and an IELTS test for UK Visas and Immigration (UKVI) purposes.

Undergraduate courses

Undergraduate courses usually require a minimum IELTS of 6.0 (with no less than 5.5 in any component) or Pearson 59 (with no less than 51 in each component) or various Cambridge certificates. Other equivalent English qualifications will also be considered. Some courses may require a higher score for professional accreditation or registration. Please check the relevant course page on our website for further information.

The Language Centre offers a range of general and academic English modules for non-native speakers of English:

- Listening and Speaking – General and Academic English
- Academic English and Study Skills
- Improving English Usage and Style in Academic Writing

The Language Centre also offers daily 20-minute one-to-one sessions if you want advice on how to improve your use of academic English in your essay or presentation.

Pre-sessional English courses

The Language Centre organises a range of preparatory English classes for students who need to improve their English before they enrol onto their Bachelor's courses.

10-week pre-sessional course

OVERVIEW

Dates: Wednesday 21 June– Friday 1 September 2017

Cost: £4,000*

*Cost includes transport from Birmingham Airport (arrival day 21 June), tuition, a mandatory two day induction (22 and 23 June), accommodation at the University of Worcester and a social programme.

Entry requirements:

Undergraduate: IELTS score of 5.0 overall with no less than 4.5 in any element

6-week pre-sessional course

OVERVIEW

Dates: Wednesday 19 July– Friday 1 September

Cost: £2,800*

*Cost includes transport from Birmingham Airport (arrival day 19 July), tuition, a mandatory two day induction (20 and 21 July), accommodation at the University of Worcester and a social programme.

Entry requirements:

Undergraduate: IELTS score of 5.5 overall with no less than 5.0 in any element



For more information about the pre-sessional English course and how to apply, please contact the International Office on international@worc.ac.uk

FEES AND SCHOLARSHIPS

Tuition fees

2017/18 Fees for International Students (non-EU)

Pre-sessional English for progressing to degree courses

Pre-sessional 10-week course (including accommodation)	£4,000
Pre-sessional 6-week course (including accommodation)	£2,800

Undergraduate

BA (Hons), BSc (Hons), HND	£11,700
----------------------------	---------

Fees for EU Students

EU fees for the majority of Undergraduate courses are £9,250 per year. Students from the EU are eligible for Student Finance. Please refer to the website for more details about how to apply for student loan and information about fees for specific courses.

Suggested budgets

For an undergraduate student living on the University campus for the 38-week academic year, a student will need in the region of £6,000 to £7,500 to cover living expenses including accommodation.

International costs

You should ensure that you have enough funds to cover your tuition and living costs for the duration of your course before you apply for a visa. If you cannot provide an official letter from a sponsor stating that they will cover all of your fees and living costs for the duration of your course, you must be able to prove that you have sufficient funds to be able to cover the cost of your course and your stay in the UK.

Scholarships

We offer scholarships for international students to support them during their studies. All international fee-paying students who have met the criteria will be eligible for one of the following scholarships:

International Student (non-EU) Scholarships and Bursaries

Alumni Loyalty Scholarship	15% tuition fee/year
Family/Sibling Bursary	15% tuition fee/year
International Undergraduate Scholarship	£1,000–£3,000 each year

Early Payment Discount	£500
------------------------	------

For detailed information about how to apply and scholarship criteria, please visit our website: www.worcester.ac.uk/international

PRE-ARRIVAL INFORMATION

Studying in a foreign country is an exciting and challenging experience. That's why we provide you with friendly support at each stage of your journey; helping you prepare for your departure, making you feel at home when you arrive in Worcester and supporting you throughout your studies and beyond.

The University offers a Meet and Greet service for international students starting at Worcester. We arrange a free coach pick-up from Birmingham Airport (45 minutes' drive from the University) on the day before the International Induction. For September starters, there will also be free pick-ups from Heathrow Airport.

If you are arriving into another UK airport, you can make your way to Birmingham Airport for the Meet and Greet service if you wish. Worcester is on a direct line from London Paddington Railway Station.

Look out for our pre-arrival webinars during August, which will help you with all you need to know about arriving in the UK.

Find out more about the Meet and Greet service at www.worcester.ac.uk/international

Arrival

On arrival at the University of Worcester, you will be handed a Welcome Pack with an induction timetable, maps and other useful information. You will also be given your accommodation key, if you have selected University-managed accommodation. Our team of friendly Student Ambassadors will be on hand throughout the day for campus tours or to answer any questions you may have.

Induction

The first session of our three-day international induction is an interactive student-led session, where you'll find out essential information about our Student Services, Programme Advisors and other professional services. The induction includes social events which give you the opportunity to make friends with students from all round the world and excursions to help you get to know your surroundings.

Welcome Week

The International Induction is a perfect preparation for Welcome Week; by the time the UK students arrive on campus you will have had the opportunity to adjust to the climate and culture and attend to those practical issues such as opening bank accounts or buying essential household goods. You will be ready to join your classmates for the institute academic inductions, to join some of our numerous clubs and societies and to integrate with other students in the Students' Union social events.



STUDENT SUCCESS

AS ONE OF THE TOP UNIVERSITIES IN ENGLAND FOR GRADUATE EMPLOYABILITY, WITH OVER 95% OF OUR GRADUATES IN WORK OR FURTHER STUDY SIX MONTHS AFTER GRADUATING, WORCESTER EQUIPS STUDENTS FOR SUCCESS IN AN INCREASINGLY COMPETITIVE JOB MARKET. BUT WHAT DO OUR STUDENTS THINK? SOME OF OUR CURRENT AND FORMER STUDENTS SHARE THEIR EXPERIENCES AND PASS ON TIPS TO HELP YOU SUCCEED. YOU CAN FIND MORE STUDENT STORIES ON OUR WEBSITE AND ON OUR STUDENT BLOG.



"I loved my course as it incorporated all of the fields I am interested in from GIS to sustainability and immigration. The amount of practical experience and fieldwork that we got to do here is simply amazing. The emphasis on practical experience and a friendly and supportive approach from the staff prepared me well for further study and employment."

ZUZKA MAJCOVA
FROM CZECH REPUBLIC
Graduate, BA (Hons) Human Geography



"I believe that the Institute of Sport & Exercise Science at Worcester offers an excellent balance of research based teaching and applied practical experiences. A range of opportunities on my course allowed me to develop theoretical and practical skills, which have definitely helped me further my career in the sport science field."

MYKOLAS KAVALIAUSKAS
FROM LITHUANIA
Graduate, BSc (Hons) Sport & Exercise Science, MSc Sports Coaching
TEACHING ASSOCIATE IN SPORT SCIENCE &
HEALTH AT EDINBURGH NAPIER UNIVERSITY



"The University of Worcester has proven to be an excellent learning environment for me – I got plenty of support from my module leader, who was always helpful throughout my studies. During my time as a student, I worked as a student ambassador within the university and have been a Student Academic Representative in both my BA Nursing Undergraduate and in my Public Health Postgraduate degree. It has been easy for me to make friends here in Worcester, and in my free time, I have been volunteering as a youth worker in my local church and joined the Young Enterprise Society, so have been involved in many activities."

**TOMILAYO AKINSIKU
FROM NIGERIA**

*Graduate, BSc (Hons) Nursing Studies (for overseas nurses),
MSc Public Health*



"I chose to study the Sport & Exercise Science course at Worcester for a few reasons: the city itself, the campus and also the brilliant facilities that the University have for sport sciences. What I enjoy most about my course is the work we do in the sports laboratories including video analysis.

I found it very easy to settle into life at the University. My flat mates took care of me right from day one and I get an incredible amount of support from the tutors, who are always willing to take the time to help me with my studies."

**MANAV BAJAJ
FROM INDIA**

*Sport & Exercise Science
BSc (Hons) student*



"My business degree at Worcester has been a great preparation for my current job. I found the analysis of real-life business cases very interesting. Being part of the International Committee was the highlight of my studies. It was the best way to get into contact with different nationalities and cultures. I really enjoyed studying in such an international environment. There's lots to get involved with here – my experience in societies like rowing or musical production (Loco Show) has made my time at Worcester unforgettable."

**ALEXANDER SCHREIBER
FROM GERMANY**

*Graduate, Business, Management
& Economics BA (Hons)
SALES DESK ASSOCIATE
AT MICROSOFT
(MUNICH, GERMANY)*

"The staff at Worcester are friendly, approachable and supportive. I have made friends from all around the world, and have taken part in activities such as the university singing group. I feel very happy and at home here."

**CONG NGUYEN
FROM VIETNAM**

*Joint Honours student, BA (Hons)
Screenwriting and Illustration*



"I loved the environment of Worcester, especially in the summer. There's lots of green space to enjoy – on campus and in the city itself. It only took me two weeks to settle in – most students are very kind so it was not difficult to make friends with class mates and roommates. The 'Firstpoint' facility at the University gave me a lot of support for living and study. The city has much to offer – I love the river, and have fond memories of watching fireworks on the bridge during my time as a student."

**GUOBIN LI (LOUIS)
FROM CHINA**

*Graduate, International
Business BA (Hons)*

HUMAN RESOURCES PROFESSIONAL



"Worcester is a wonderful place to study, work and live in. The lecturers on the course were all superb, and I enjoyed studying with wonderful colleagues on the course with me (from lots of different countries)."

**TOBI ANWO
FROM NIGERIA**

*Graduate, BSc (Hons)
Nursing Studies (for
overseas nurses)*



"My experience at University of Worcester has become a solid foundation for my professional career. Beyond the standard curriculum of my Business, Economics and Advertising course I gained very important skills that still help me succeed professionally every single day – discipline, critical thinking and simplifying complex issues. The University of Worcester is also popular among international students from all over the world – from Finland to India via Romania, which brought diversity and allowed me to easily integrate into University life while learning about new cultures and perspectives.

Also not to be underestimated is the city of Worcester – it's small enough to reduce long commutes, but big enough and really well-connected to offer anything you may be looking for as a young person – coffee shops, shopping, nightlife, sporting grounds and easily accessible other amazing parts of Britain."

**JULIA OGNIEVA
FROM UKRAINE**

*Graduate, BA (Hons) Business, Economics & Advertising
STRATEGIC PRODUCT PARTNERSHIPS AT FACEBOOK*



"When I first got to Worcester I really liked the environment, and the people here are very nice. The most beautiful part of Worcester is around the cathedral, especially on a sunny day, around the river! My studies have really developed my critical thinking skills, and my classmates were really helpful."

**MIN CHANG
FROM CHINA**

*Graduate, BA (Hons) Business Management
and current MSc Business Psychology student*

"I found the University of Worcester by a lucky chance through a recruitment event in Helsinki. I was not considering studying abroad prior to this event, but once I heard about the available courses at the University of Worcester and researched the university afterwards, my decision was made very easily. The course helped to provide me with knowledge of world economies and functioning of businesses, which I have found useful in my career since graduating."

**ELISA SANDSTRÖM
FROM FINLAND**

*Graduate, BA (Hons) Business,
Management and Economics
SALES AND MARKETING MANAGER
AT DREAM RACING LLC*

FLEXIBLE APPROACHES TO LEARNING

Whatever you want from your time at Worcester, the University's flexible approach to learning provides it.

We support international students from all academic backgrounds and provide levels of studies ranging from Foundation to PhD. Students can also apply for direct advance entry (e.g. Year 2 or Final Year entry) of undergraduate studies if they can demonstrate appropriate prior academic records.

PERSONAL ACADEMIC TUTORING

New undergraduate students are appointed an Academic Tutor. This is usually one of the people teaching on your course, who will remain with you throughout your undergraduate studies. They are here to help, guiding you in everything from selecting the right modules to preparing for your career. Meet our experts:

www.worcester.ac.uk/discover/academic-departments

SINGLE OR JOINT HONOURS

Lots of undergraduate degree courses are available as Single or Joint Honours. With a Single Honours degree you focus almost entirely on one main subject. A Joint Honours degree balances two subjects equally.

The University has one of the most varied selections of two-subject degrees in the country, and there's a full list of course combinations at www.ucas.com

ELECTIVE MODULES

If you take a Single Honours course, why not broaden your studies and boost your employment potential with an elective module? There's a whole range available to not only complement your main area of study but also give you the chance to meet students and staff from other disciplines. The options currently include Business and Social Enterprise, Sustainability, Healthy Lifestyles and Languages.

EARN AS YOU LEARN

The University has pioneered a great 'Earn As You Learn' scheme to help students find paid employment during their studies. The University makes links with relevant employers to identify opportunities for part-time work. Typical vacancies include: care assistant work, working at children's play schemes or after school clubs, learning support work in schools, language tutors, youth workers, retail, coaching and administration.

Over 600 students are employed in a range of roles at the University itself, from campus guides and ambassadors to research assistants and library staff.

You'll be able to find out more through the University's Careers Service – follow them on social media or register with their Jobs Zone website to find out about the latest positions.

Please note that students with Tier 4 visa can currently work up to 20 hours per week during term time and can work full-time during holidays.



Facebook – [UniversityofWorcesterCareers](https://www.facebook.com/UniversityofWorcesterCareers)
Twitter – [@worc_unicareers](https://twitter.com/worc_unicareers)
worcester.ac.uk/careers

UNIVERSITY OF WORCESTER INTERNATIONAL COLLEGE



THE UNIVERSITY OF WORCESTER INTERNATIONAL COLLEGE (UWIC) WILL OPEN ITS DOORS TO INTERNATIONAL STUDENTS FROM SEPTEMBER 2017. UWIC WILL OFFER COURSES FOR STUDENTS WHO HAVE NOT MET THE REQUIREMENTS FOR DIRECT ENTRY TO UNDERGRADUATE STUDIES OR WHO NEED EXTRA ENGLISH LANGUAGE SUPPORT BEFORE STARTING THEIR MASTER'S COURSE. VISIT THE UNIVERSITY'S WEBSITE WORCESTER.AC.UK FOR FURTHER DETAILS.

UNDERGRADUATE COURSES

A

Accountancy Degrees BA (Hons)
Accounting BA (Hons)
Accounting & Finance BA (Hons)
Advertising BA (Hons)
Advertising Degrees BA (Hons)
Animal Biology BSc (Hons)
Animation BA (Hons)
Applied Criminology BA (Hons)
Applied Health & Social Science BA (Hons)
Applied Health & Social Science BA (Hons) Top-up Degree
Archaeology & Heritage Studies BA (Hons)
Art & Design BA (Hons)
Assistant Practitioner FdSc

B

Biochemistry BSc (Hons)
Biology BSc (Hons)
Birth & Beyond FdA/BA (Hons)
Business Information Technology BSc (Hons)
Business Law Degrees BA (Hons)
Business Management BA (Hons)
Business Psychology BSc (Hons)

C

Child & Adolescent Mental Health BSc (Hons) Top-up Degree
Child & Adolescent Mental Health FdSc
Clinical Psychology BSc (Hons)
Computer Games Design & Development BSc (Hons)
Computing BSc (Hons)
Counselling BSc (Hons)
Counselling FdSc
Counselling Psychology BSc (Hons)
Creative Digital Media BA (Hons)
Creative & Professional Writing BA (Hons)
Cricket Coaching & Management BSc (Hons)
Criminology BA (Hons)
Crisis Workers for Sexual Violence FdSc

D

Dance & Community Practice BA (Hons)
Dementia Studies FdSc
Drama & Performance BA (Hons)

E

Early Childhood (Professional Practice) BA (Hons)
Ecology BSc (Hons)
Economics Degrees BA (Hons)
Educational Psychology BSc (Hons)
Education Studies BA (Hons)
English Language BA (Hons)
English Literature BA (Hons)
Entrepreneurship BA (Hons)
Entrepreneurship Degrees BA (Hons)
Environmental Science BSc (Hons)

F

Film Production BA (Hons)
Film Studies BA (Hons)
Finance Degrees BA (Hons)
Fine Art BA (Hons)
Football Business Management & Coaching FdSc
Forensic & Applied Biology BSc (Hons)
Forensic Psychology BSc (Hons)

G

Game Art Design BA (Hons)
Geography BSc (Hons)
Graphic Design & Multimedia BA (Hons)

H

Health Sciences BSc (Hons) Top-up Degree
Health & Social Care FdSc
History BA (Hons)
Human Biology BSc (Hons)
Human Geography BA (Hons)
Human Nutrition BSc (Hons)
Human Resource Management Degrees BA (Hons)

Here is a list of the full-time undergraduate courses we currently offer. For the most up-to-date list, please visit our website at www.worcester.ac.uk

If you don't know where to begin, visit our interactive course finder – www.worcester.ac.uk/inspireme

I

Illustration BA (Hons)
Information Technology for Education BSc (Hons)
Integrated Working with Children & Families BA (Hons) Top-up Degree
International Business BA (Hons) Top-up Degrees
International Business Management BA (Hons)

J

Journalism BA (Hons)

L

Law LLB (Hons)
Leadership Degrees BA (Hons)
Learning Disabilities FdSc
Learning Support FdA

M

Management Degrees BA (Hons)
Marketing, Advertising & Public Relations BA (Hons)
Marketing BA (Hons)
Marketing Degrees BA (Hons)
Mathematics BSc (Hons)
Media & Culture BA (Hons)
Mental Health FdSc
Midwifery BSc (Hons)
Music Education MMusEd

N

Nursing BSc (Hons)
Nursing Studies BSc (Hons) Top-up Degree

O

Occupational Therapy BSc (Hons)
Outdoor Adventure Leadership & Management BSc (Hons)

P

Paramedic Science FdSc
Physical Education BSc (Hons)
Physical Education & Dance BA (Hons)
Physical Education & Outdoor Education BSc (Hons)
Physical Geography BSc (Hons)
Physiotherapy BSc (Hons)
Plant Science BSc (Hons)
Politics: People & Power BA (Hons)
Primary Initial Teacher Education (with QTS) BA (Hons)
Primary & Outdoor Education BA (Hons)
Professional Practice BA (Hons) Top-up Degree
Psychology BSc (Hons)
Public Relations Degrees BA (Hons)

R

Religion, Philosophy & Values in Education BA (Hons)

S

Screenwriting BA (Hons)
Social Work BA (Hons)
Sociology BA (Hons)
Special Educational Needs, Disabilities & Inclusion BA (Hons)
Speech, Language & Communication FdSc
Sport Business Management BA (Hons)
Sport Development & Coaching BA (Hons)
Sport & Exercise Psychology BSc (Hons)
Sport & Exercise Science BSc (Hons)
Sports Coaching Science BSc (Hons)
Sports Coaching Science with Disability Sport BSc (Hons)
Sports Studies BSc (Hons)
Sports Therapy BSc (Hons)

T

Teaching: Primary Initial Teacher Education (with QTS) BA (Hons)

W

Web Development BSc (Hons)

POSTGRADUATE COURSES

A

Advancing Practice MSc
Applied Sport Science MSc
Archaeological Landscapes MA
Archaeology MRes

B

Biology MRes
Business/Occupational Psychology MSc

C

Clinical Education MRes
Counselling MSc
Creative Digital Media MA

D

DBA (Doctor of Business Administration)
Diet, Nutrition and Health MSc
Doctor of Education (DEd)
Doctor of Health Science (DHSc)
Drama MA

E

Ecology and Environmental Management MRes
Education MA
Education (Early Childhood) MA
Education (Church School Leadership) MA
Education (Leadership and Management) MA
Education (Leading Learning and Teaching) MA
Education (Mentoring and Coaching) MA
Education (Religious and Values Education) MA
Education (Special and Inclusive Education) MA
Education MRes

F

Finance MSc

H

Human Resource Management MSc

I

International Management MSc

Here is a list of the full-time postgraduate courses we currently offer. If you don't know where to begin, visit our interactive course finder www.worcester.ac.uk/inspireme

The entry requirements published in the guide are subject to change. Please consult the website for the most up-to-date requirements.

L

Law and Ethics for Health and Social Care LLM

Law and Ethics for Health and Social Care MSc

M

MBA

Marketing MSc

N

Nursing Studies (for overseas nurses) MSc

Nutritional Therapy MSc

O

Outdoor Education MA

P

Postgraduate Certificate in
Education – PGCE – Primary

Postgraduate Certificate in Education
– PGCE – Secondary

Physician Associate MSc

Psychology MSc

Public Health MSc

R

River Science MRes

S

Socio-Cultural Studies of Sport and Exercise MRes

Sports Coaching MSc

Sports Management MSc

Sustainable Development Advocacy (Professional
Practice) MA

T

Transformative Practice MA

GET IN TOUCH

University of Worcester
St John's Campus
Henwick Grove
Worcester
WR2 6AJ
UK

+44 (0)1905 855000
international@worc.ac.uk
www.worcester.ac.uk

Admissions: +44 (0)1905 855111
admissions@worc.ac.uk

Accommodation: +44 (0)1905 855300
accommodation@worc.ac.uk

International: +44 (0)1905 542640
international@worc.ac.uk

KEEP UP WITH WHAT'S HAPPENING

Discover the latest from the
University of Worcester on
Facebook, Twitter and Instagram.

[worchester.ac.uk/follow-us](http://www.worcester.ac.uk/follow-us)



*Meet our
students*

READ OUR STUDENT BLOG AT
WORCESTERSTUDENTLIFE.COM



Contact us: international@worc.ac.uk